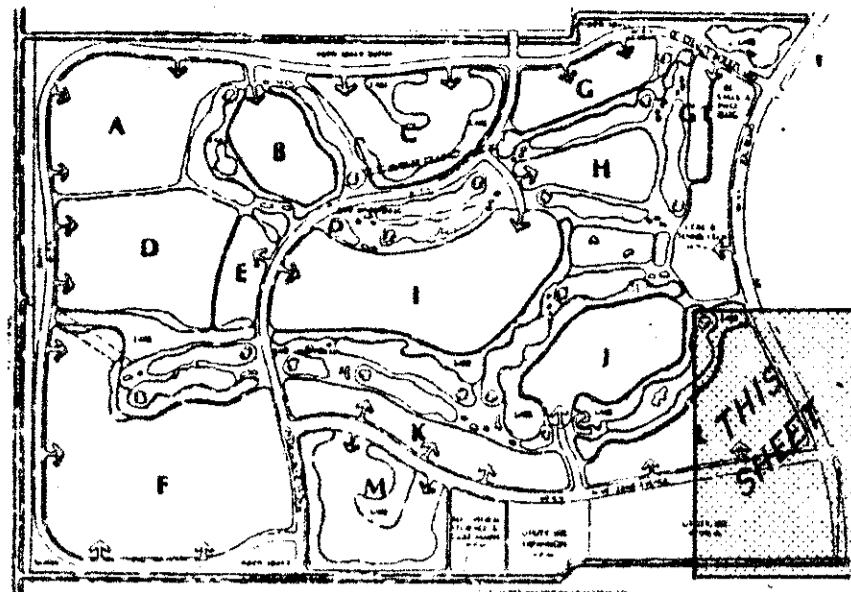


DRAWING NUMBER
55/22



KEY MAP
NOT TO SCALE

ABERDEEN - PLAT NO. 2

A PORTION OF A (P.U.D.)

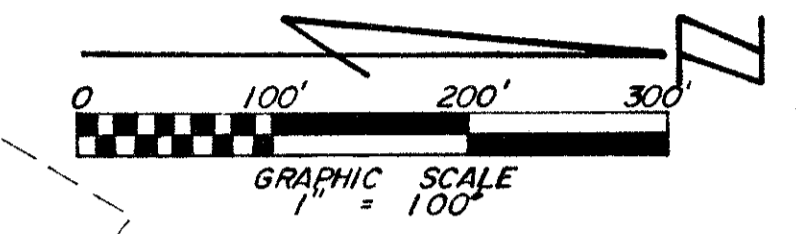
SECTIONS 15 & 16, TOWNSHIP 45 SOUTH, RANGE 42 EAST

PALM BEACH COUNTY, FLORIDA - AUG., 1986

BEING A REPLAT OF A PORTION OF BLOCK 47 AND THE SCHOOL TRACT LYING IN SECTION 16, TOWNSHIP 45 SOUTH, RANGE 42 EAST, PALM BEACH FARMS CO. PLAT NO. 3, RECORDED IN PLAT BOOK 2, PAGE 49, PUBLIC RECORDS OF PALM BEACH COUNTY, FLORIDA

22

STATE OF FLORIDA }
COUNTY OF PALM BEACH } ss
This Plat was filed for record at _____ M.
this _____ day of _____
19 _____, and duly recorded in Plat Book No. _____
on page _____
JOHN B. DUNKLE, Clerk Circuit Court
By _____, D.C.

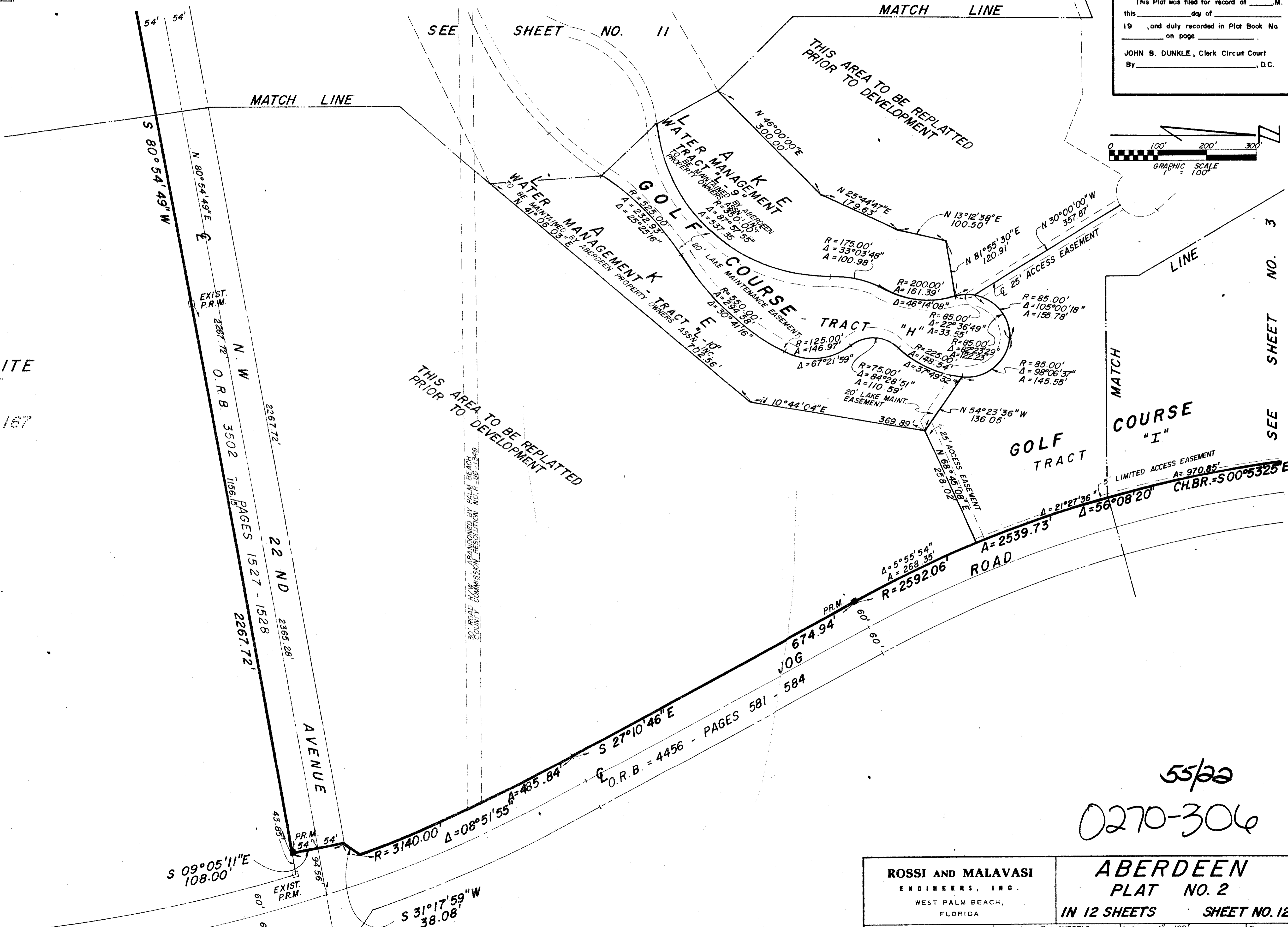


DRAWING NUMBER

DRAWING NUMBER

DRAWING NUMBER

UTILITY SITE
LE CHALET
PLAT NO. 1
P.B. 31 - PGS. 166 - 167



THIS AREA TO BE REPLATTED
PRIOR TO DEVELOPMENT

THIS AREA TO BE REPLATTED
PRIOR TO DEVELOPMENT

COURSE
"I"

GOLF
TRACT

55/22
0270-306

ROSSI AND MALAVASI ENGINEERS, INC. WEST PALM BEACH, FLORIDA		ABERDEEN PLAT NO. 2 IN 12 SHEETS SHEET NO. 12	
Date	AUGUST, 1986	Designed	T.J. CURBELO
Drawn	D. FREDERICK	Scale	1" = 100'
Checked		Job No.	
		File No.	
			Sheet 12 of 12